

ZC3H11A Antibody (N-term)
Affinity Purified Rabbit Polyclonal Antibody (Pab)
Catalog # AP20363a**Specification**

ZC3H11A Antibody (N-term) - Product Information

Application	WB,E
Primary Accession	O75152
Other Accession	O6NZF1 , O5ZJJ1 , A0A1B0GTU1 , P0DQW0
Reactivity	Human, Mouse
Predicted	Chicken
Host	Rabbit
Clonality	Polyclonal
Isotype	Rabbit IgG
Calculated MW	89131
Antigen Region	38-65

ZC3H11A Antibody (N-term) - Additional Information**Gene ID** 9877**Other Names**

Zinc finger CCCH domain-containing protein 11A, ZC3H11A, KIAA0663, ZC3HDC11A

Target/Specificity

This ZC3H11A antibody is generated from rabbits immunized with a KLH conjugated synthetic peptide between 38-65 amino acids from the N-terminal region of human ZC3H11A.

Dilution

WB~~1:1000

E~~Use at an assay dependent concentration.

Format

Purified polyclonal antibody supplied in PBS with 0.09% (W/V) sodium azide. This antibody is purified through a protein A column, followed by peptide affinity purification.

Storage

Maintain refrigerated at 2-8°C for up to 2 weeks. For long term storage store at -20°C in small aliquots to prevent freeze-thaw cycles.

Precautions

ZC3H11A Antibody (N-term) is for research use only and not for use in diagnostic or therapeutic procedures.

ZC3H11A Antibody (N-term) - Protein Information**Name** ZC3H11A

Synonyms KIAA0663, ZC3HDC11A

Function Through its association with TREX complex components, may participate in the export and post-transcriptional coordination of selected mRNA transcripts, including those required to maintain the metabolic processes in embryonic cells (PubMed:[22928037](#), PubMed:[37356722](#)). Binds RNA (PubMed:[29610341](#), PubMed:[37356722](#)).

Cellular Location

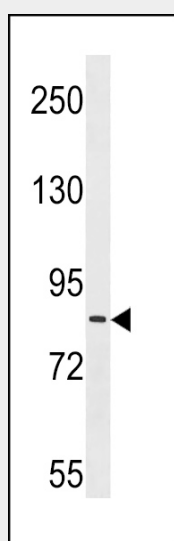
Nucleus. Nucleus speckle. Note=Retained in nuclear speckles though interaction with PABPN1.

ZC3H11A Antibody (N-term) - Protocols

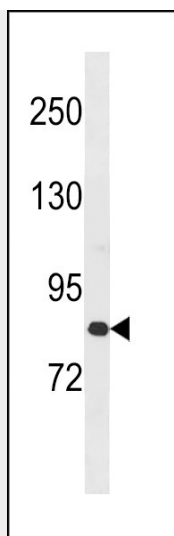
Provided below are standard protocols that you may find useful for product applications.

- [Western Blot](#)
- [Blocking Peptides](#)
- [Dot Blot](#)
- [Immunohistochemistry](#)
- [Immunofluorescence](#)
- [Immunoprecipitation](#)
- [Flow Cytometry](#)
- [Cell Culture](#)

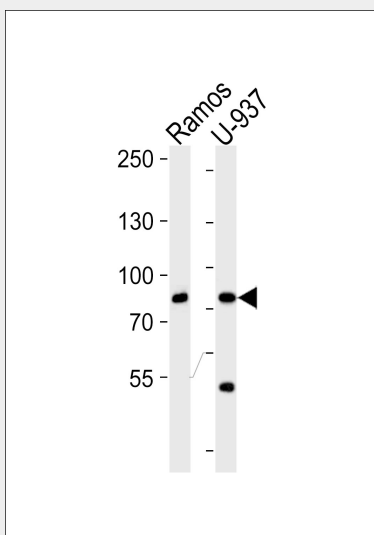
ZC3H11A Antibody (N-term) - Images



ZC3H11A Antibody (N-term) (Cat. #AP20363a) western blot analysis in Ramos cell line lysates (35ug/lane). This demonstrates the ZC3H11A antibody detected the ZC3H11A protein (arrow).



ZC3H11A Antibody (N-term) (Cat. #AP20363a) western blot analysis in mouse spleen tissue lysates (35ug/lane). This demonstrates the ZC3H11A antibody detected the ZC3H11A protein (arrow).



Western blot analysis of lysates from Ramos, U-937 cell line (from left to right), using ZC3H11A Antibody (N-term) (Cat. #AP20363a). AP20363a was diluted at 1:1000 at each lane. A goat anti-rabbit IgG H&L(HRP) at 1:5000 dilution was used as the secondary antibody. Lysates at 35ug per lane.

ZC3H11A Antibody (N-term) - Background

ZC3H11A, also known as zinc finger CCCH type containing 11A, contains 3 C3H1-type zinc fingers.